

DANTEBAD HOUSING PROJECT

Munich, Germany

Dietrichstr.

DANTEBAD HOUSING PROJECT

Munich, Germany

TYPE

temporary housing in permanent structure

STRUCTURE

a five-story building with 100 housing units (one- and two-bedrooms) for 129 people (50% - refugees and 50% - people on local welfare support) with a garden and children's playground on the roof. The building is built with a timber frame upon reinforced concrete stilts above the preserved public parking lot. The units were prefabricated offsite and put together on site¹³.

Apart from the concrete table on the ground floor, the external arcades, and the staircases, the building is made entirely of wood. The stairwells and apartment partitions are made of solid wood. The ceilings are cross-laminated timber, and the outer walls are wood-frame construction¹⁴. Because of the high degree of prefabrication of the wall and ceiling elements, four floors with a building dimension of 112.40 m x 11.40 m were installed within eight weeks¹⁵.

TIME TO BUILD

180 days

OPERATION TIME

finished in December 2016

FUNDING

Munich city

TOTAL COST

EUR 1,805 per sq m (building and engineering costs)

OF REFUGEES

129

AVERAGE AREA PER RESIDENT

23 sq m

GENERAL INFO

HISTORY OF THE SITE

GALLERY

TEAM BEHIND IT

DANTEBAD HOUSING PROJECT

Munich, Germany

HISTORY OF THE SITE

The Dantebad project, which currently hosts a mix of refugees, social housing beneficiaries, low-income households and unemployed individuals, was built above a publicly owned parking lot. This type of solution might be replicated on other public parking lots that cannot otherwise be spared for redevelopment, offering an example of multipurpose development in a constrained urban environment¹⁶. The surrounding residential buildings (in the area of Borstei) also feature high density. For this reason, the building volume doesn't just fit in very well from an urban planning perspective—it enriches the neighborhood, leading to improved use of the available free space.

In order to retain most of the existing parking spots, first a reinforced-concrete structure of columns and slabs was built. Over this, the actual residential building was constructed as a timber-frame structure. Only the two stairwells and the two head-end structures, where the building services, storage, and trash disposal are housed, occupy ground-level space that is otherwise retained for parking.

The apartments are connected by corridors that begin at the stairwells. In front of every three apartments, the corridor broadens into a small niche that can be furnished and used as a meeting point for residents. Most apartments are one-room apartments, but two-and-a-half-room apartments are also available. Further offerings for residents include a common area, a laundry salon, and a rooftop terrace with play areas, lounge decks, and space to grow herbs and vegetables. To match the urban context, the facades have been painted colorfully and fit quite naturally into the surroundings¹⁷.

GENERAL INFO

HISTORY OF THE SITE

GALLERY

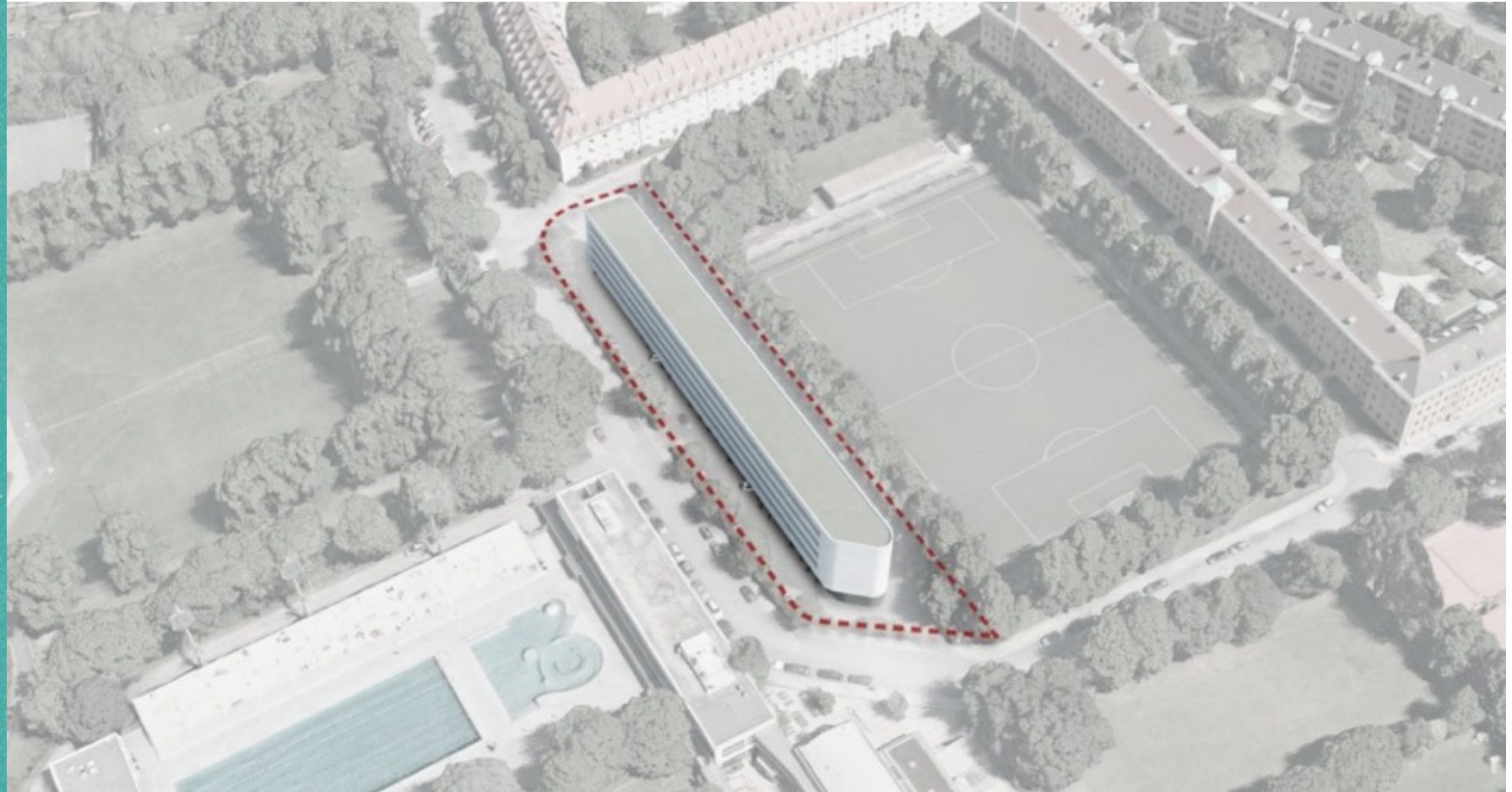
TEAM BEHIND IT

DANTEBAD HOUSING PROJECT

Munich, Germany

SITE MAP

*Source: The View
from Afar*



GENERAL INFO

HISTORY OF THE SITE

GALLERY

TEAM BEHIND IT

DANTEBAD HOUSING PROJECT

Munich, Germany

DANTEBAD HOUSING

*Source: La Fabrique
de la Cité*

GENERAL INFO

HISTORY OF THE SITE

GALLERY

TEAM BEHIND IT



DANTEBAD HOUSING PROJECT

Munich, Germany

PARKING LOT UNDER
THE BUILDING

*Source: The View
from Afar*

GENERAL INFO

HISTORY OF THE SITE

GALLERY

TEAM BEHIND IT



DANTEBAD HOUSING PROJECT

Munich, Germany

DANTEBAD FROM
AFAR

Source: Cube
Magazine

GENERAL INFO

HISTORY OF THE SITE

GALLERY

TEAM BEHIND IT



DANTEBAD HOUSING PROJECT

Munich, Germany

ENTRANCE TO ONE
OF THE UNITS

*Source: The View
from Afar*



GENERAL INFO

HISTORY OF THE SITE

GALLERY

TEAM BEHIND IT

DANTEBAD HOUSING PROJECT

Munich, Germany

VIEW OF THE UNITS
AND CORRIDORS

Source: sdg21.eu

GENERAL INFO

HISTORY OF THE SITE

GALLERY

TEAM BEHIND IT



DANTEBAD HOUSING PROJECT

Munich, Germany

ENTRANCE TO
DANTEBAD

Source: Cube
Magazine

GENERAL INFO

HISTORY OF THE SITE

GALLERY

TEAM BEHIND IT



DANTEBAD HOUSING PROJECT

Munich, Germany

INSIDE THE UNIT

Source: Durr Group

GENERAL INFO

HISTORY OF THE SITE

GALLERY

TEAM BEHIND IT



DANTEBAD HOUSING PROJECT

Munich, Germany

INSIDE THE UNIT

Source: Durr Group

GENERAL INFO

HISTORY OF THE SITE

GALLERY

TEAM BEHIND IT



DANTEBAD HOUSING PROJECT

Munich, Germany

A ROOF TERRACE ON
THE UPPER FLOOR OF
THE BUILDING

Source: Durr Group

GENERAL INFO

HISTORY OF THE SITE

GALLERY

TEAM BEHIND IT

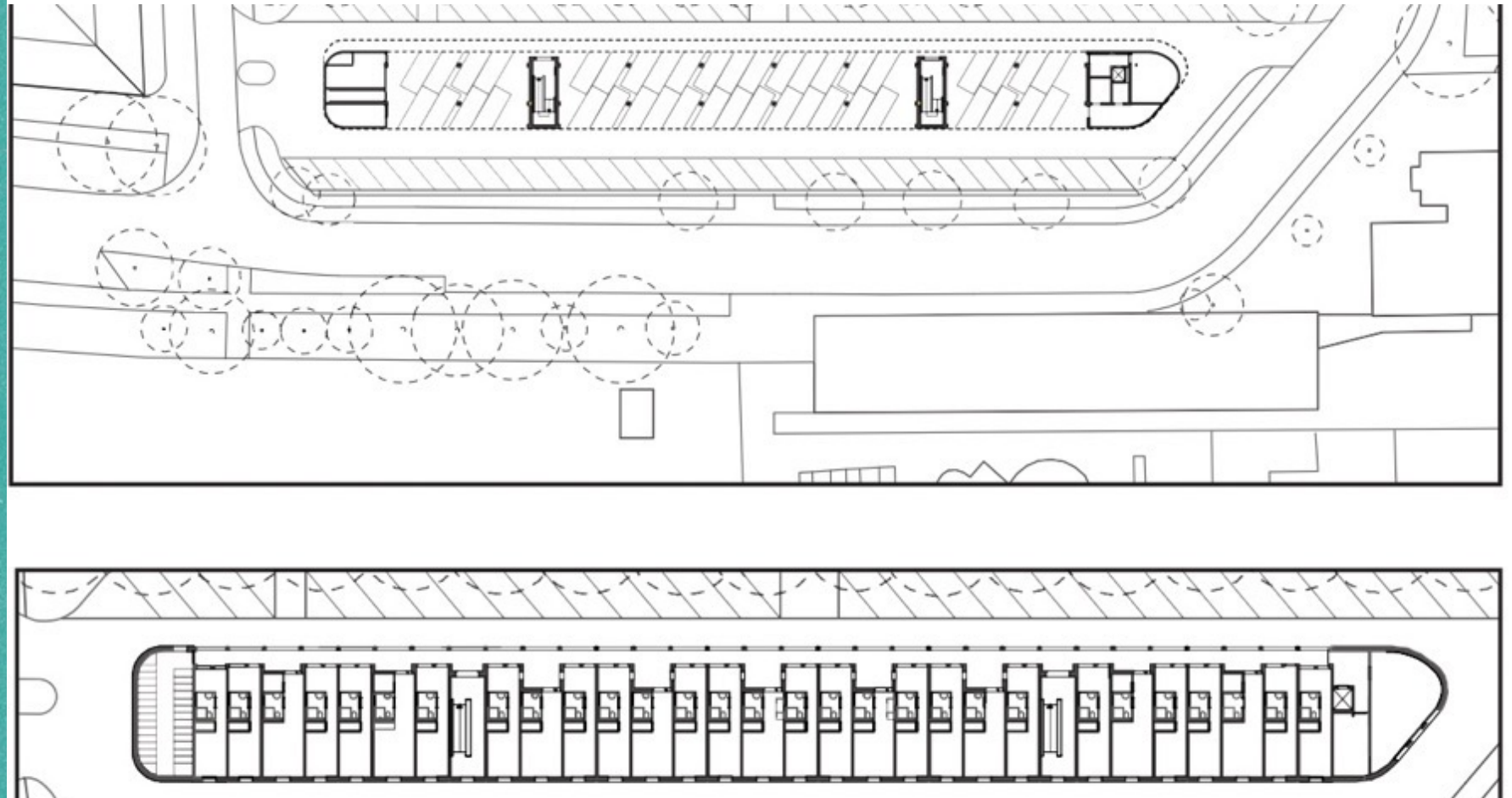


DANTEBAD HOUSING PROJECT

Munich, Germany

SITE MAP & FIRST-
FLOOR PLAN

Source: Making
Heimat



GENERAL INFO

HISTORY OF THE SITE

GALLERY

TEAM BEHIND IT

DANTEBAD HOUSING PROJECT

Munich, Germany

VIEW OF THE
BUILDING FROM THE
FRONT

*Source: The View
from Afar*



GENERAL INFO

HISTORY OF THE SITE

GALLERY

TEAM BEHIND IT

DANTEBAD HOUSING PROJECT

Munich, Germany

HOUSING
CONSTRUCTION AT
RECORD SPEED:
GEWOFAG'S TURBO
PROJECT AT
DANTEBAD (in
German)

Source: GEWOFAG
Holding GmbH

GENERAL INFO

HISTORY OF THE SITE

GALLERY

TEAM BEHIND IT



Link to video: https://www.youtube.com/watch?v=TrHFjZ_Zhd8&t=6s

DANTEBAD HOUSING PROJECT

Munich, Germany

GERMAN DEVELOPER
AWARD 2018 - PILOT
PROJECT AT THE
DANTEBAD MUNICH
(in German)

Source: Die
Wohnungswirtschaft

GENERAL INFO

HISTORY OF THE SITE

GALLERY

TEAM BEHIND IT



Link to video: <https://www.youtube.com/watch?v=AjCzjYtTIXo>

DANTEBAD HOUSING PROJECT

Munich, Germany

COMMISSIONED BY

GEWOFAG municipal social construction company

ARCHITECT

Florian Nagler Architekten GmbH

CONSTRUCTION

- B+O Wohnungswirtschaft GmbH Bayern
- Durr Group
- Huber+Sohn
- Bachmehring (timber work)



SIMILAR PROJECTS

Dantebad 2 in Munich by Florian Nagler Architekten GmbH [\[learn more\]](#)

GENERAL INFO

HISTORY OF THE SITE

GALLERY

TEAM BEHIND IT