

BREMEN CONTAINER VILLAGES - RED, GREEN & BLUE

Bremen, Germany



BREMEN CONTAINER VILLAGES - RED, GREEN & BLUE

Bremen, Germany

GENERAL INFO

HISTORY OF THE SITE

GALLERY

TEAM BEHIND IT

TYPE

temporary housing with alternate longer-term use

STRUCTURE

Two- to three-story buildings arranged in courtyard configurations are built with 3x3x9 m individual steel frame and metal modular containers. They provide independent living units of 24 sq m for two people and 48 sq m for four people, each with a private kitchen and a bathroom. Each building has a laundry and a drying room¹⁸

TIME TO BUILD

4-8 months

OPERATION TIME

all with an initial intended lifespan of 5 years

- Hemelingen (green) January 2016
- Überseetor (red) December 2015
- Grohn (blue) November 2015

FUNDING

Bremen city

TOTAL COST

appx. EUR 1,100 per sq m GFA

OF REFUGEES

- Hemelingen (green) 240 residents / 6 buildings
- Überseetor (red) 180 residents / 8 buildings
- Grohn (blue) 162 residents / 7 buildings

AVERAGE AREA PER RESIDENT

appx. 12.5 sq m/person (not including general management areas / common spaces)

BREMEN CONTAINER VILLAGES - RED, GREEN & BLUE

Bremen, Germany

HISTORY OF THE SITE

Three sites with temporary homes were constructed on municipal land and approved for five years¹⁹. Houses are designed in courtyards to facilitate integration and communication among residents. Depending on the site, buildings are either two or three stories and are built using non-standard 3x3x9 m individual steel frame and metal modular containers. Units are designed for either two- or four-person households and feature private kitchens and bathrooms, and a laundry and drying room shared among residents of the same building²⁰. The container houses are each supplemented structurally with a secondary roof to protect against bad weather and the sun²¹.

Independent units provide privacy which is rarely a feature of emergency refugee housing. The complex has 24-hour security.

While buildings are intended for an initial 5-year lifespan, the high architectural quality of the design allows them to last for an estimated further 15 to 20 years²².

The project is part of 14 residential accommodations in the Northern Germany area that have been developed similarly by the Feldschnieders + Kister Architects BDA office in recent years.

GENERAL INFO

HISTORY OF THE SITE

GALLERY

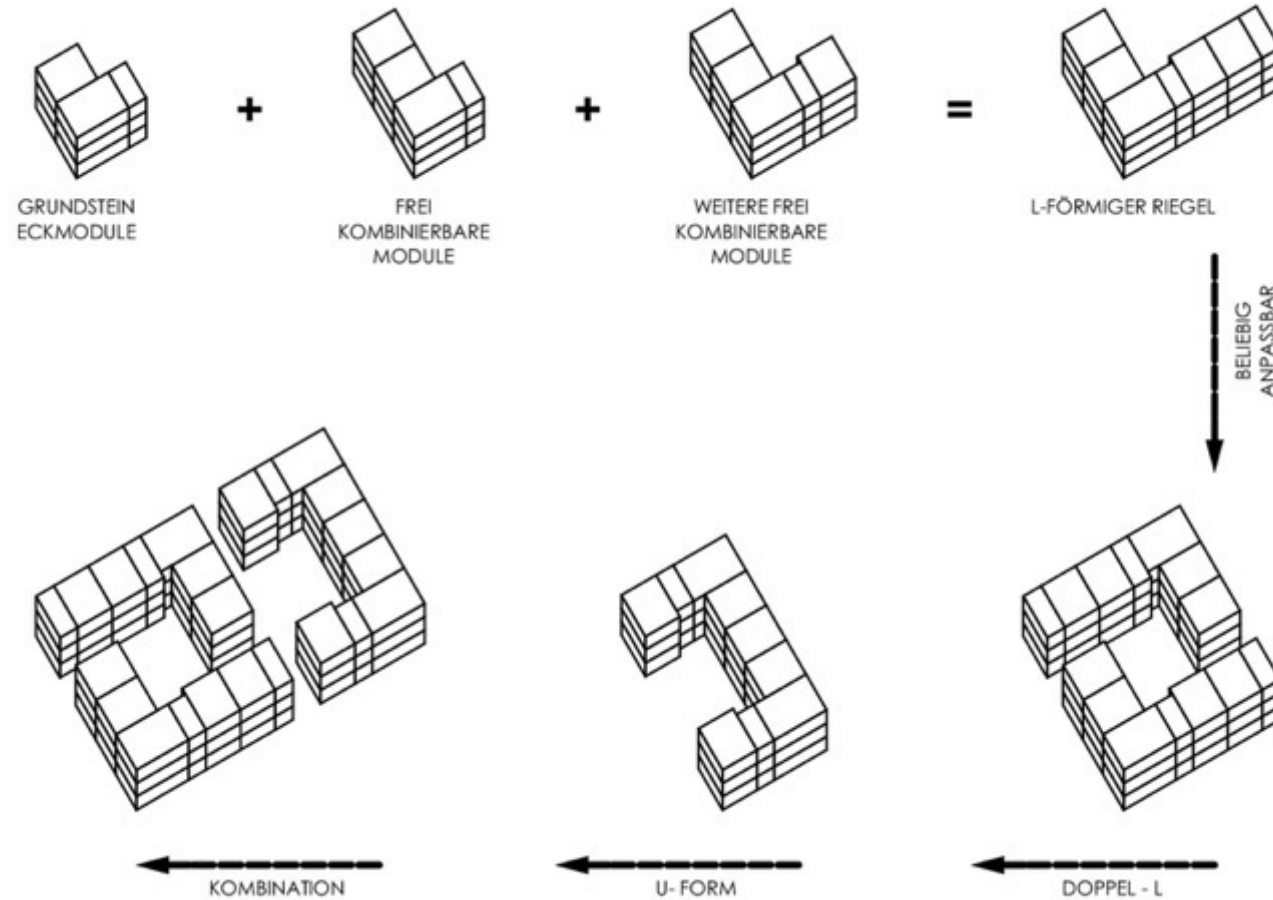
TEAM BEHIND IT

BREMEN CONTAINER VILLAGES - RED, GREEN & BLUE

Bremen, Germany

CONTAINER VILLAGES CONCEPT

Source: Making Heimat



GENERAL INFO

HISTORY OF THE SITE

GALLERY

TEAM BEHIND IT

BREMEN CONTAINER VILLAGES - RED, GREEN & BLUE

Bremen, Germany

VIEW OF ÜBERSEETOR
(RED VILLAGE)

Source: *Making
Heimat*



GENERAL INFO

HISTORY OF THE SITE

GALLERY

TEAM BEHIND IT

BREMEN CONTAINER VILLAGES - RED, GREEN & BLUE

Bremen, Germany

HEMMELINGEN
(GREEN VILLAGE)
COURTYARD

Source: Making
Heimat



GENERAL INFO

HISTORY OF THE SITE

GALLERY

TEAM BEHIND IT

BREMEN CONTAINER VILLAGES - RED, GREEN & BLUE

Bremen, Germany

HEMMELINGEN
(GREEN VILLAGE)
CONTAINERS

*Source: Making
Heimat*

GENERAL INFO

HISTORY OF THE SITE

GALLERY

TEAM BEHIND IT

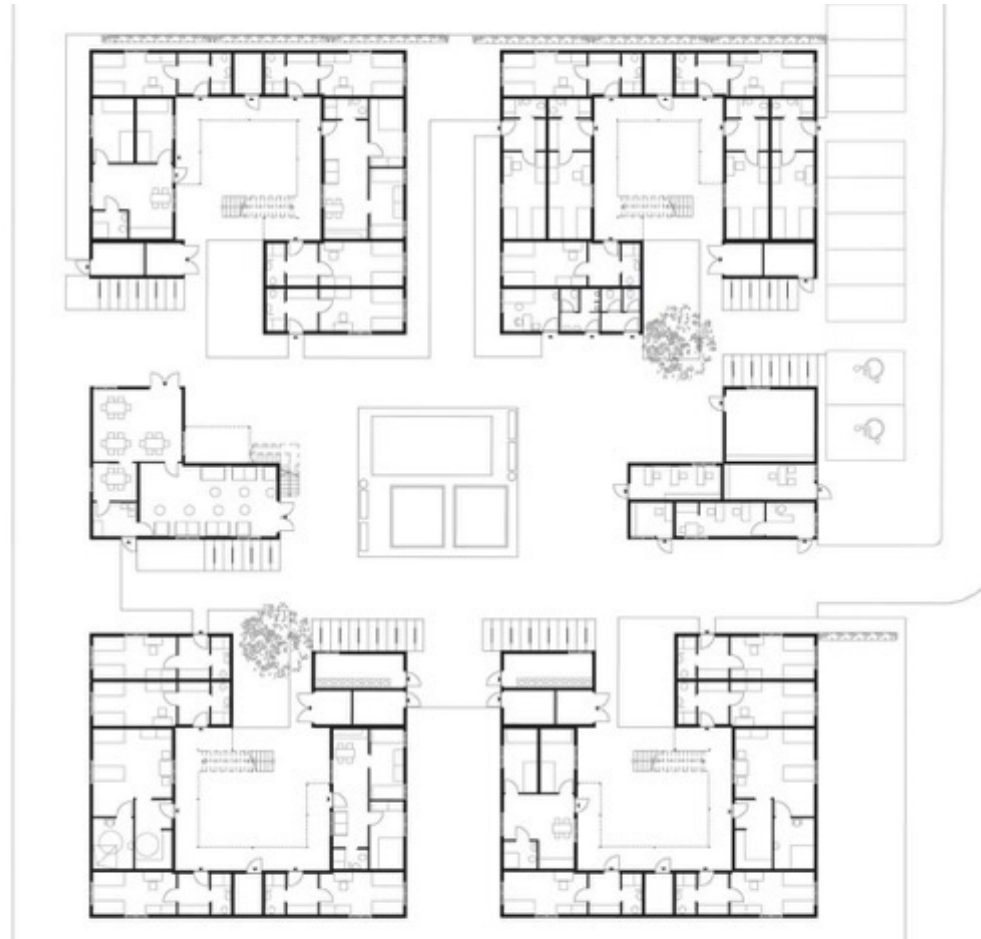


BREMEN CONTAINER VILLAGES - RED, GREEN & BLUE

Bremen, Germany

HEMMELINGEN
(GREEN VILLAGE)
GROUND LEVEL
FLOOR PLAN

Source: Making
Heimat



GENERAL INFO

HISTORY OF THE SITE

GALLERY

TEAM BEHIND IT

BREMEN CONTAINER VILLAGES - RED, GREEN & BLUE

Bremen, Germany

HEMMELINGEN
(GREEN VILLAGE)
COMMON ROOM

Source: Algeco



GENERAL INFO

HISTORY OF THE SITE

GALLERY

TEAM BEHIND IT

BREMEN CONTAINER VILLAGES - RED, GREEN & BLUE

Bremen, Germany

HEMMELINGEN
(GREEN VILLAGE)
KITCHEN AND
BATHROOM

Source: Algeco

GENERAL INFO

HISTORY OF THE SITE

GALLERY

TEAM BEHIND IT



BREMEN CONTAINER VILLAGES - RED, GREEN & BLUE

Bremen, Germany

HEMMELINGEN
(GREEN VILLAGE)
BATHROOM

Source: Algeco

GENERAL INFO

HISTORY OF THE SITE

GALLERY

TEAM BEHIND IT



BREMEN CONTAINER VILLAGES - RED, GREEN & BLUE

Bremen, Germany

HEMMELINGEN
(GREEN VILLAGE)
LAUNDRY AND
DRYING ROOM

Source: Algeco



GENERAL INFO

HISTORY OF THE SITE

GALLERY

TEAM BEHIND IT

BREMEN CONTAINER VILLAGES - RED, GREEN & BLUE

Bremen, Germany

CORRIDORS OF
GROHN (BLUE
VILLAGE)

*Source: Making
Heimat*



GENERAL INFO

HISTORY OF THE SITE

GALLERY

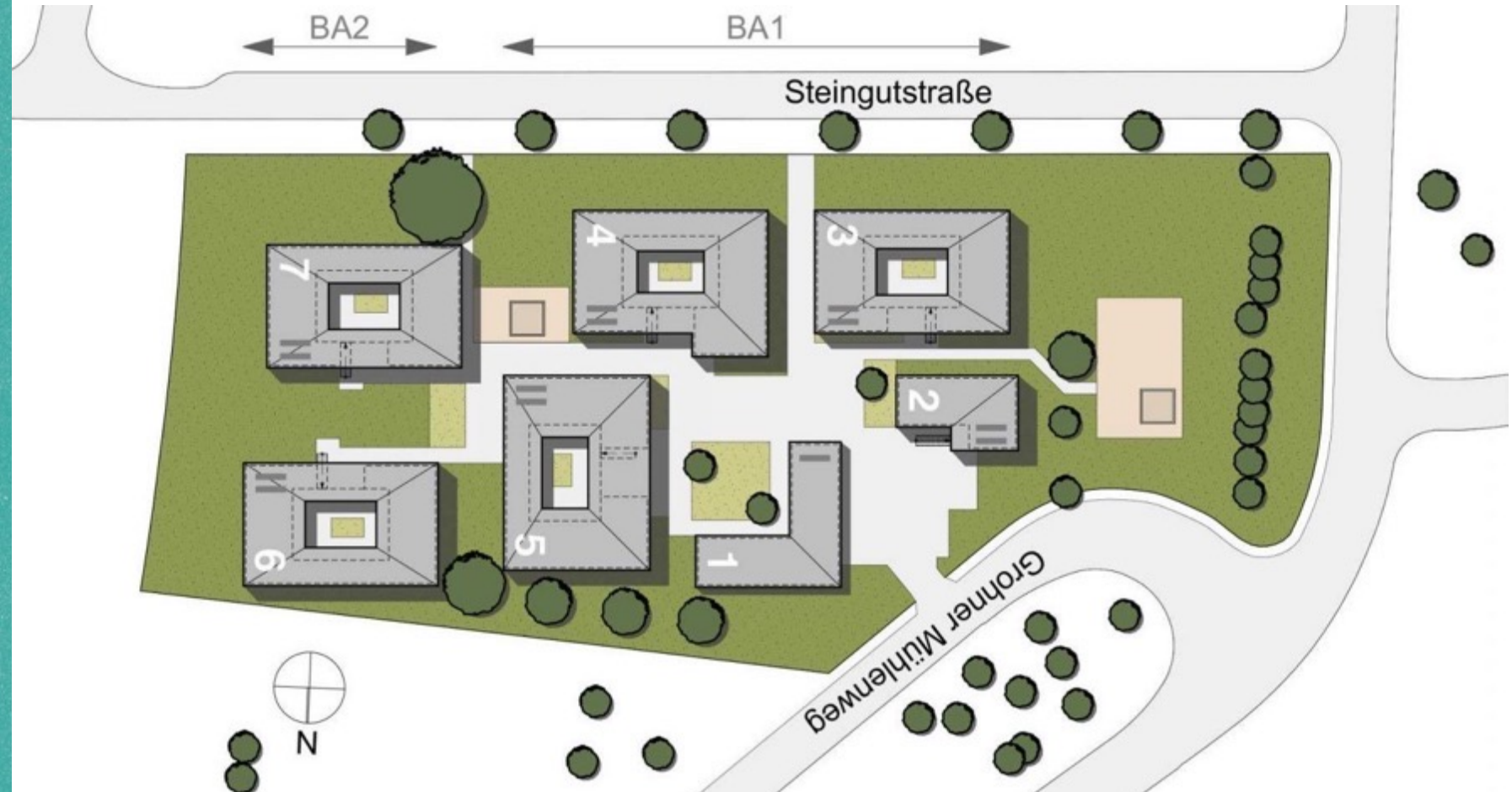
TEAM BEHIND IT

BREMEN CONTAINER VILLAGES - RED, GREEN & BLUE

Bremen, Germany

GROHN
(BLUE VILLAGE)
SITE MAP

Source: Making
Heimat



GENERAL INFO

HISTORY OF THE SITE

GALLERY

TEAM BEHIND IT

BREMEN CONTAINER VILLAGES - RED, GREEN & BLUE

Bremen, Germany

GROHN
(BLUE VILLAGE)
CONTAINERS

*Source: Making
Heimat*

GENERAL INFO

HISTORY OF THE SITE

GALLERY

TEAM BEHIND IT



BREMEN CONTAINER VILLAGES - RED, GREEN & BLUE

Bremen, Germany

COMMISSIONED BY

Bremen Senator for Social Affairs, Children, Adolescents, and Women

ARCHITECT

Architekten BDA Feldschnieders + Kisters, Bremen

CONSTRUCTION

- Firma Algeco GmbH: Hemelingen (green) and Grohn (blue)
- Firma G. Ungrund GmbH: Überseetor (red)



SIMILAR PROJECTS

- Municipal containers (Zurich, Switzerland) [\[learn more\]](#)
- Container village (Flörsheim am Main and Krieffel, Germany) built on a former parking lot [\[learn more\]](#)
- Container village (Tübingen, Germany) [\[learn more\]](#)

GENERAL INFO

HISTORY OF THE SITE

GALLERY

TEAM BEHIND IT